

AIR-BAG

Airbag Stretcher

EXTRETCHER Manual

Be sure to read this manual for your safety and proper use of EXTretcher (Airbag Stretcher). Keep this manual in your EXTretcher Bag (Bag for the exclusive use of EXTretcher) to make it available anytime in case of need.

The marks used in this manual denote as follows:

WARNING !

This mark denotes that if the "WARNING" is ignored, it could result in death or a serious injury to the user of this product.

CAUTION !

This mark denotes that if the "CAUTION" is ignored, it could result in a physical injury or a material damage.

MUGEN DENKO JAPAN MUGEN DENKO CO.,LTD.

mail: mugen@hit-air.com

1-1012, Ikeba, Tempaku-ku, Nagoya 468-0055, Japan

Safety Precautions

WARNING ⚠ 1. Do not take any parts of EXTretcher apart.

WARNING ⚠ 2. Do not inflate EXTretcher when it is folded or rolled.

WARNING ⚠ 3. Let air out of EXTretcher completely to pack it into the EXTretcher Bag.

WARNING ⚠ 4. Keep and use it at the temperature below 40°C.

CAUTION ⚠ 5. Keep open flames and cigarettes away from EXTretcher as holes or tears caused by them will prevent its function.

CAUTION ⚠ 6. Inspect EXTretcher whether there is any damaged part before use.

CAUTION ⚠ 7. Inspect EXTretcher for any damage before use, ask an authorized dealer for a maintenance check, once a year depending on frequency of use.

CO₂ cartridge

○ CO₂ cartridge contains CO₂ gas.

○ Screw CO₂ cartridge fully into the bottom of the activation device until it cannot go any further. Otherwise, EXTretcher may not inflate or may inflate slowly.

○ Do not reuse CO₂ cartridge once used. Replace it with a new one.

Observe the followings to avoid an explosion.

WARNING ⚠ 1. Keep and use cartridge at the temperature below 40°C.

WARNING ⚠ 2. Do not give cartridge a strong shock.

WARNING ⚠ 3. Do not heat cartridge.

WARNING ⚠ 4. Do not let corrosion form on the surface of cartridge. If corrosion is noticed, replace it immediately.

WARNING ⚠ 5. Confirm that the used cartridge is empty of gas before disposing.

WARNING ⚠ 6. Do not cut or puncture cartridge.

WARNING ⚠ 7. Install a cartridge of the same size and contents as the one at the time of the purchase of EXTretcher.

CAUTION ⚠ 8. Use cartridge for EXTretcher only, not for any other purpose.

CAUTION ⚠ 9. Once cartridge is installed, do not attempt to turn, loosen or remove.

CAUTION ⚠ 10. Keep cartridges out of the reach of children.

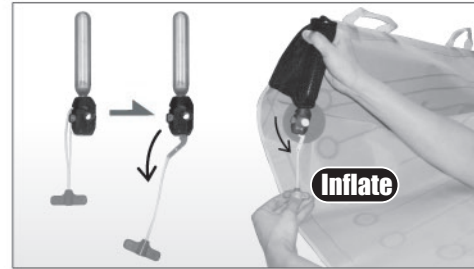
CAUTION ⚠ 11. Screw cartridge fully into the bottom of the activation device until it cannot go any further.

How to inflate



1 Take EXTretcher out of EXTretcher Bag and spread out.

WARNING ⚠ Do not inflate EXTretcher when it is folded or rolled.



2 Hold CO₂ cartridge upright (as above) and pull cord of the activation device downwards to activate/inflate EXTretcher.

WARNING ⚠ Let air out of EXTretcher completely before activation/inflation. Otherwise it may burst.



3 Fully inflated (within 3 sec. from activation) and usable.

How to re-install

If there is no damage to EXTretcher, it is reusable repeatedly by replacing CO₂ cartridge.

How to let air out



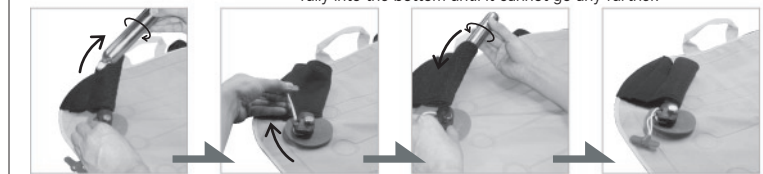
1 Push air escape valve using the projection on the cap. 2 Let air out by rolling EXTretcher. 3 Cap the air escape valve.

1 After use, push the air escape valve using the projection on the cap and roll the whole EXTretcher to deflate completely.

CAUTION ⚠ Put the cap on the air escape valve after deflation without fail.

How to re-install

CAUTION ⚠ The used CO₂ cartridge is not reusable. Screw new CO₂ cartridge fully into the bottom until it cannot go any further.



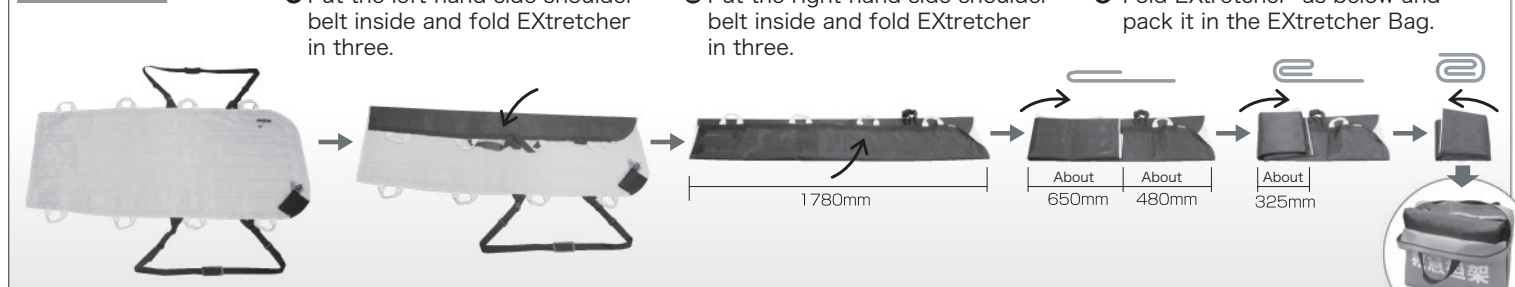
1 Hold the activation device and unscrew the used cartridge. 2 Lift the lever of the activation device. 3 Screw new CO₂ cartridge fully into the bottom until it cannot go any further. 4 Re-installation is done and EXTretcher is now usable.

2 Unscrew and take out the used cartridge, lift the lever and install new cartridge. To pack and keep EXTretcher in EXTretcher Bag, follow the instructions as below.

WARNING ⚠ Let air out of EXTretcher completely. Otherwise, it may burst when it is inflated again.

How to pack EXTretcher into bag

How to pack



CAUTION ⚠ If any air is left inside EXTretcher, it will not be packed properly.

Completion